

MARCH 2011

COSMOPOLITAN

\$3.99
SPECIAL

THE SEX QUIZ

YOU MUST TAKE

Find Out What Really
Turns You On...and Feel
Lustier Than Ever Before

Get Naked!

**25 Fun Ways to Go
Nude (Without Freezing
Your Butt Off)**

PMS NEWS

The Fruit
That Prevents
Bloating

We Found Your Future Boyfriend!
23 Great Places to Meet Men

Sexy
Eyes,
Irresistible
Lips

Lea Michele

Glee's Good Girl Has
Some Naughty Secrets

FOR HIS THIGHS ONLY

This Erotic Touch
Will Practically Melt
His Boxer Briefs

**THE MOST
DANGEROUS
THING A
WOMAN CAN
SAY YES TO**

\$3.99



cosmopolitan.com

beautyQ+A

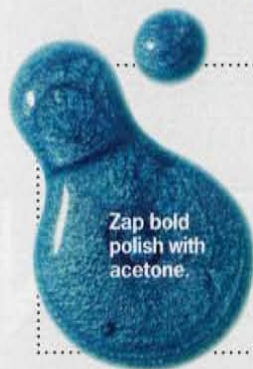
Every month, we answer a bunch of your burning beauty questions.

The secret to soft stems starts in the shower.



Q My legs itch badly after I shave. How can I prevent this?

"You're likely not getting enough moisture onto your legs before, during, and after shaving," says NYC derm Elena Jones. When skin dries out, microscopic tears form, which can trigger itchiness. Look for super-hydrating ingredients like glycerin, silicone, shea butter, or vitamin E in your body wash, shave gel—necessary even if you're using a razor with a built-in moisture strip—and body lotion (we like the richness of Suave Advanced Therapy Body Lotion, \$2.30).



Zap bold polish with acetone.

Q Acetone nail-polish remover works so much better than nonacetone. Is it really that bad?

No, says CND cofounder Jan Arnold. It gets a bad rap for drying out nails, but since it gets rid of polish faster (with less product) than nonacetone, it's still your best option. To cut nail contact time more, soak a cotton pad with remover and rest it on tips for two seconds to soften the polish before swiping off.

Q Can hair products that contain alcohol fade my color?

A Yes. "Besides the usual suspects like sun and water, products with high alcohol contents—such as mousses, hair sprays, and volumizers—will strip pigment from the surface of strands," says NYC colorist Sharon Dorram. Preserve your hue with a volumizing, color-protecting shampoo (like Aveeno's, at right). When blow-drying, pull the hair at the crown straight up with a round brush, blast it with hot air, and then switch to cool air to lock in the lift.



Aveeno Living Color Shampoo, \$7.50

Q How do I apply cream blush without ruining my foundation?

A First, swipe your finger into the blush and onto the back of your opposite hand to get rid of any excess product, says Angela Levin, a celebrity makeup artist for Chanel. Then tap (rather than rub) color onto cheeks in circular motions. "This blends the blush into the base without wiping it away," says Levin.

Q The skin on my eyelids is flaking. What's going on?

A "You're probably having a mild allergic reaction to a product," says NYC derm Anne Chapas. Nickel and cadmium (often found in shimmering eye shadows) are common culprits. Nail polish is one too: Rubbing eyes with manicured fingers transfers harsh ingredients (like formaldehyde) to this sensitive area. "In response, your body overproduces skin cells to shed the irritants," says Dr. Chapas. Use a calming hydrocortisone cream twice a day for a week (if it lasts longer than that, see your derm).

COSMOPOLITAN.COM/BEAUTYQA | Have a question for Cosmo's primping pros? Ask it here!